

Mako Surf Rescue Inflatable Boats



Mako Inflatable Rescue Boats have been designed and developed to operate in the most extreme surf conditions. The boat can be launched from surf beaches or from mother vessels. The entire boat is built from flexible fabric with a removable floorboards construction so that it can be folded up into small dimensions.

The floor of the craft is constructed of fabric tensioned between the inflatable tubes. The removable fiberglass floorboard fits on top of the fabric. There are 2 separate "Speed Tubes" or "Hi-Jackers" that are fitted below the main tubes to form a full catamaran design hull that allows the craft to maintain planning speeds through choppy conditions and turn more effectively.

The shape of the catamaran hull, proven dimensions and materials used in the construction give the craft its characteristics and high speed performance. Mako Inshore Rescue Boats are supplied with tow rope, paddles, pressure gauge, pump, repair kit, tool bag and safety knife. Additional features include carry bag, stowage bags, engine safety stop, v-strips and adjustable foot straps. The transom is designed for hand steer / hand throttle tiller outboard engines up to 50hp.

The standard hull and tube colour is orange for high visibility in surf and white water conditions. Mako Rescue Boats are manufactured from Hypalon or Heat Welded PVC fabric. The boats are hand built for quality, performance and safety, meeting ISO 6185 Inflatable Boat Standards, ISO 9002 Quality Assurance & EU Recreational Craft Directive (CE Mark). Mako Rescue boats are used by many surf rescue organizations and are increasingly used as flood rescue craft by different government disaster management organizations

Mako Surf Rescue Inflatable Boats

MAKO Titan Commercial Inflatable Boat is designed to offer a high performance product with light weight, compact design and efficient load space

Fast operation

- ✓ Dual floor system
 - Aluminium Rigid Floorboards or Aluminium Slat Roll-up floor
- ✓ Special Self-inflation system [optional]

Excellent performance

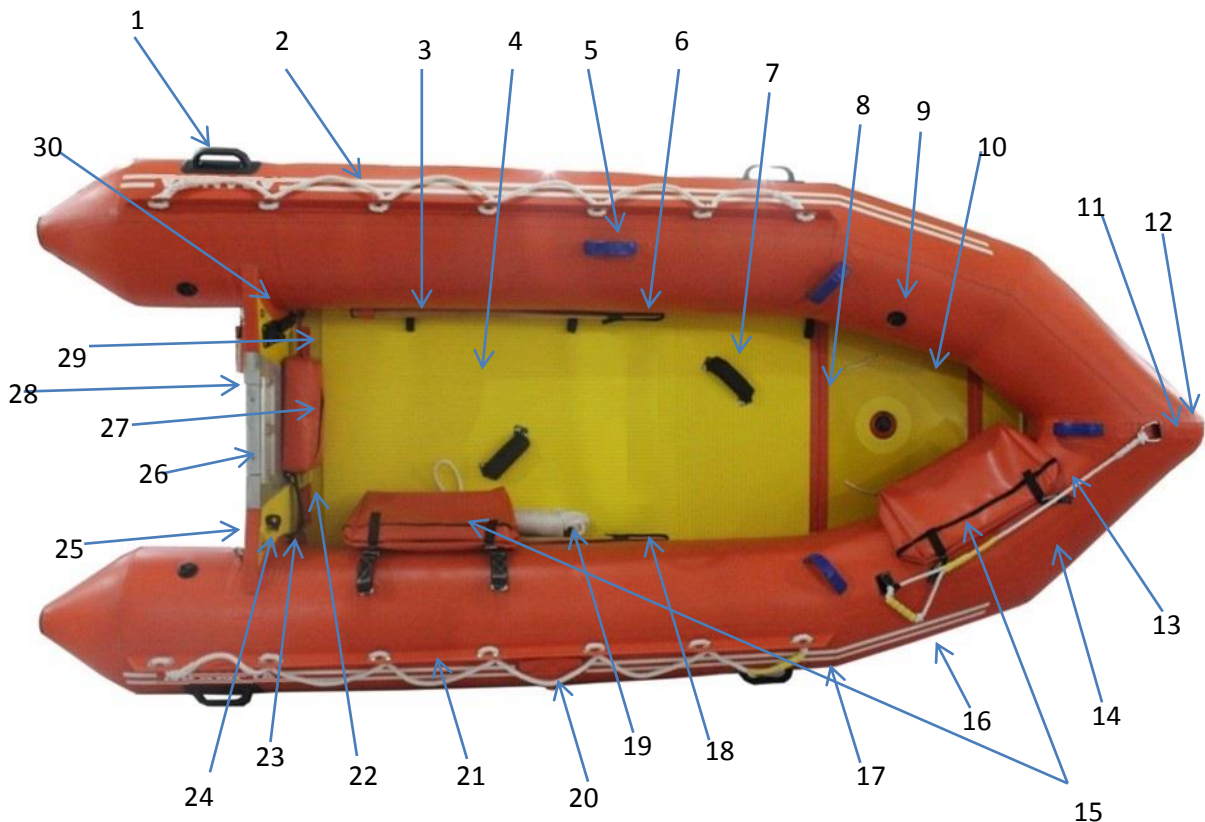
- ✓ Aluminium roll-up floor boards have same rigidity as rigid floorboards due to the special design of our self-inflation system that gives different air pressure to the keel and speed tubes
- ✓ Stable performance without rolling while operating Roll-up floor boats
- ✓ Tight junctions between transom / main tubes by computerized cutting of components resulting in a high quality and rigid product

Durability

- ✓ Premium materials such as CSM coated fabric from ORCA / Achilles / Mehler
- ✓ Aluminum motor pad with adjustable ship plate
- ✓ Strong accessories : Rubbing strake, PU handles.

Mako Surf Rescue Inflatable Boat

- | | |
|--|---|
| 1. External molded Polyurethane lifting handle | 16. Underside rubbing strips |
| 2. Exterior life line | 17. Rubbing strake |
| 3. Fuel line retaining loops | 18. Wooden paddle |
| 4. Anti-slip EVA pad (Foam thickness 6mm) | 19. 30M x8mm tow rope and snap hook |
| 5. Internal soft crew handle(PVC) | 20. Re-righting rope in pocket |
| 6. Paddle holders and ties | 21. Anti-hog rail and safety line |
| 7. Adjustable Foot straps with padded neoprene | 22. Auto bailers below water line |
| 8. Fiberglass Floorboards | 23. Bailers above water line |
| 9. Air valve with over pressure relief valves | 24. Motor safety cable with hook and shackle |
| 10. Fuel tank tie-down cleats | 25. Identification plate(capacity plate) |
| 11. Bow D-ring | 26. Adjustable 5mm alloy engine clamp bracket |
| 12. Bow lifting handle | 27. Transom tool bag |
| 13. Bowman's ski handle | 28. Under side keelson Vee strip fitted |
| 14. Sign written Surf Rescue or similar signs | 29. Towing / lifting U-Bolts on transom |
| 15. Lateral storage pocket (CSM fabric) | 30. Emergency diver's knife pocket |



Mako Surf Rescue Inflatable Boat

	SR-3.8m
Max number of persons	6
Max payload-Inc Engine & Fuel	600kg
Overall length	3.8m
Overall width	1.74m
Weight empty	82kg
Buoyancy Tube Diameter	0.46m
Total Packing CBM	0.5
<u>Inflation Chambers/Safety Compartments</u>	
Main Tube compartments	4
Amount of Inflation Valves	5
Amount of Safety Valves (3 bar)	<i>optional</i>
Inflatable Keel	1
Lower Speed Tubes (hi-jackers)	n/a
Engine Capacity	
Shaft length	Short-15"
Transom Height	40cm
Recommended Power	30hp/23kW
Max power	50hp/37kW
Max engine weight	85kg
<u>Tube fabric / material options:</u>	
Tube fabric-Neoprene	1100 dtx
Tube fabric-Durotex-heat welded	1450 gm2
Inflatable Keel	Reinforced
Speed Tubes-Hi-jackers	n/a
All wear areas below waterline	Reinforced
Floorboard type 1	FRP
<u>Handling and Towing</u>	
Carrying Handles (moulded)	4
Bow handle	1
Exterior Lifeline	2
Interior Lifeline	2
Bow-S/S towing D-Ring	2
Transom-S/S towing D-Ring	2

Mako Surf Rescue Inflatable Boat



Mako Surf Rescue Inflatable Boat



Mako Surf Rescue Inflatable Boat

