

Mako Defender

Military Inflatable Boat



MAKO Defender Military Inflatable Boat (MIB) is designed to offer a high performance product with light weight, compact design and efficient load space. The MAKO MIB is a multi-tasking, heavy duty craft. Besides military and special-forces applications the MIB is suitable for rescue, diving support and multi-purpose roles.

The MAKO Military Inflatable Boat has been developed to meet the requirements of trained personnel where maximum load capacity, minimal transportation requirements and speed of deployment are all critical. These durable craft are ready for military and commercial applications in their standard specification. The MAKO MIB can be enhanced with optional extras including stowage bags, BA bottle, rapid deployment system, sign writing, emergency deflate bladders or fitted out to bespoke requirements.

The MAKO MIB uses reinforced materials throughout its build resulting in a hard wearing stable product that delivers in any situation. The MAKO MIB is designed to offer excellent handling and performance. It can be propelled with up to 60hp outboards with transom reinforcing braces. The smallest MIB, weighing only 100kg is ultra portable when stowed in its valise bag and features carrying handles when inflated. Pressure relief valves protect it from over-inflation and reinforced design features on its running surfaces reduce wear and friction.

Mako Defender

Military Inflatable Boat

MAKO Defender Military Inflatable Boat (MIB) is designed to offer a high performance product with light weight, compact design and efficient load space

Fast operation

- ✓ Dual floor system
 - Aluminium Rigid Floorboards or Aluminium Slat Roll-up floor
- ✓ Special Self-inflation system [optional]

Excellent performance

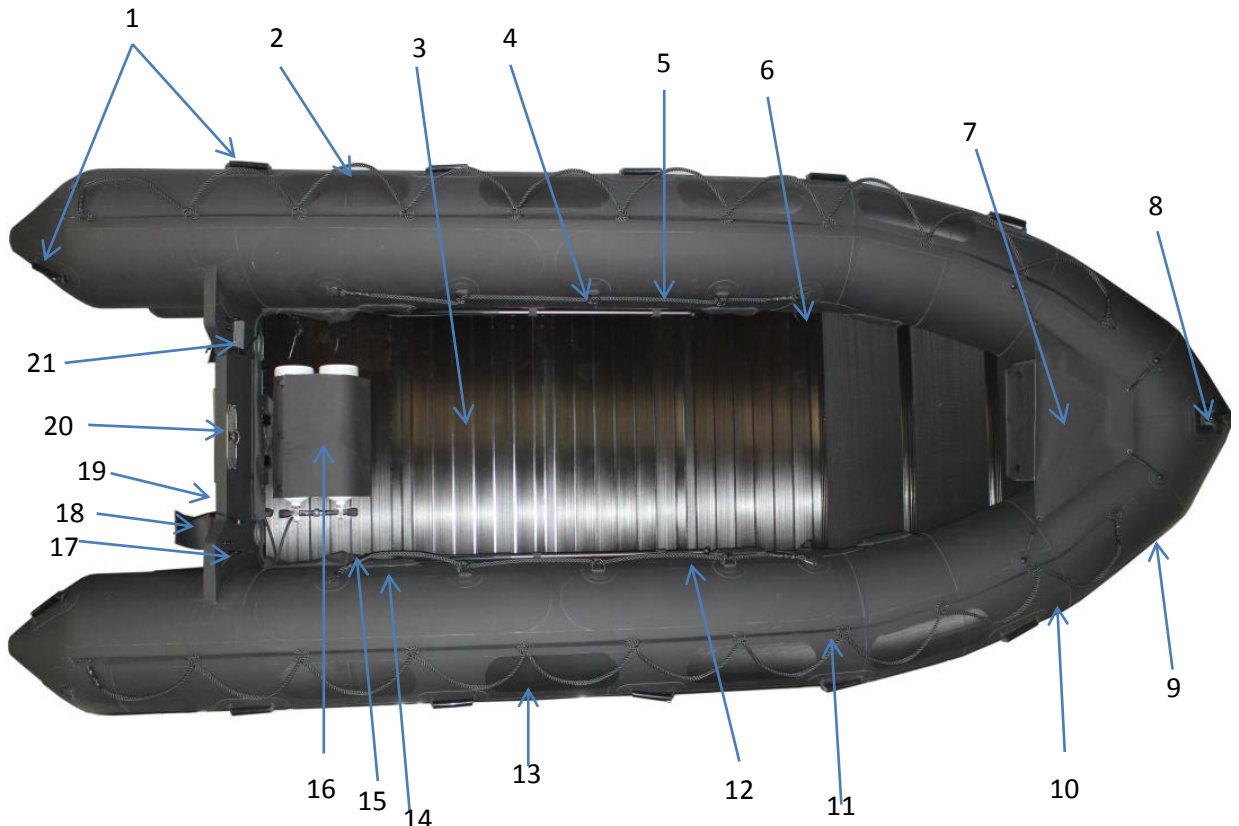
- ✓ Aluminium roll-up floor boards have same rigidity as rigid floorboards due to the special design of our self-inflation system that gives different air pressure to the keel and speed tubes
- ✓ Stable performance while operating Roll-up floor boats
- ✓ Tight junctions between transom / main tubes by computerized cutting of components resulting in a high quality and rigid product

Durability

- ✓ Premium materials such as CSM coated fabric from ORCA / Achilles / Mehler
- ✓ Aluminum motor pad with adjustable ship plate
- ✓ Strong accessories : Rubbing strake, PU handles.

Defender Military Boats - Built to Last

- | | |
|---|--|
| <ol style="list-style-type: none"> 1. External Polyurethane lifting handle w/ webbing fabric 2. Exterior life line 3. Aluminum rigid floorboards 4. Interior life line 5. Paddle holders and ties 6. Lifting D-ring 7. Bow cover and storage pocket 8. Bow Cleat 9. Underside Rubbing strake 10. Rubbing strake 11. Anti-hog rail and safety line 12. T-Paddle 13. Paddling saddles) 14. Valve protection cover | <ol style="list-style-type: none"> 15. Inflation valve 16. Self-inflation system (optional) 17. Towing / lifting O-Bolts on transom 18. Bailers (elephant trunk) 19. Auto bailers 20. Motor pad (Anodized Aluminum) 21. Identification plate <p>Additional standard equipment</p> <ul style="list-style-type: none"> • Carrying bag for boat • Carrying bag for floorboards • Inflation pump & Pressure gauge • Repair kit • Instruction manual |
|---|--|



Defender Military Boats - Built to Last

	DF-3.8m	DF-4.3m	DF-4.7m	DF-5.0m	DF-5.85m
Max number of persons	6	8	9	11	15
Max payload-Inc Engine & Fuel	600kg	950kg	1200kg	1500kg	2300kg
Overall length	3.8m	4.3m	4.7m	5.0m	5.85m
Overall width	1.74m	1.88m	2.18m	2.18m	2.48m
Weight empty	82kg	132kg	162kg	189kg	268kg
Weight Compressed air cylinder	14.2kg	14.2kg	15.3kg	20kg	28kg
Buoyancy Tube Diameter	0.46m	0.48m	0.56m	0.56m	0.63m
Total Packing CBM	0.5	1.3	1.36	1.55	1.8
<u>Inflation Chambers/Safety Compartments</u>					
Main Tube compartments	4	4	5	5	6
Amount of Inflation Valves	5	5	8	8	9
Amount of Safety Valves (3 bar)	<i>optional</i>	<i>optional</i>	<i>optional</i>	<i>optional</i>	<i>optional</i>
Inflatable Keel	1	1	1	1	1
Lower Speed Tubes (hi-jackers)	N/A	N/A	2	2	2
Engine Capacity					
Shaft length	Short-15"	Short-15"	Long-20"	Long-20"	Long-20"
Transom Height	40cm	40cm	48cm	48cm	48-52cm
Recommended Power	30hp/23kW	30hp/23kW	50hp/37kW	60hp/45kW	80hp/60kW
Max power	50hp/37kW	50hp/37kW	70hp/53kW	70hp/53kW	90hp/67kW
Max engine weight	85kg	85kg	130kg	130kg	170kg
<u>Tube fabric / material options:</u>					
Tube fabric-Neoprene	1100 dtx	1100 dtx	1100 dtx	1670 dtx	1670 dtx
Tube fabric-Durotex-heat welded	1450 gm2	1450 gm2	1450 gm2	1450 gm2	1450 gm2
Inflatable Keel	Reinforced	Reinforced	Reinforced	Reinforced	Reinforced
Speed Tubes-Hi-jackers	N/A	Reinforced	Reinforced	Reinforced	Reinforced
All wear areas below waterline	Reinforced	Reinforced	Reinforced	Reinforced	Reinforced
Floorboard type 1 – Aluminium	Slat Roll-up	Slat Roll-up	Slat Roll-up	Slat Roll-up	Slat Roll-up
Floorboard type 2 – Aluminium	Rigid	Rigid	Rigid	Rigid	Rigid
Longitudinal Stringers	2	2	2	2	2
<u>Handling and Towing</u>					
Carrying Handles (moulded)	4	4	6	8	10
Bow handle	1	1	1	1	1
Exterior Lifeline	2	2	2	2	2
Interior Lifeline	2	2	2	2	2
Interior Tie Down D-Rings	6	8	10	12	16
Bow-S/S towing D-Ring	2	2	2	2	2
Transom-S/S towing D-Ring	2	2	2	2	2
Bow-Internal S/S lifting points	2	2	2	2	2
Transom-S/S lifting points	2	2	2	2	2

Defender Military Boats - Built to Last



Defender Military Boats - Built to Last

